

Heavy Duty Mesh

GRASSFORM PRODUCT GUIDELINE

Grass Car Parks | Pedestrian Paths | Equestrian Surfaces

Heavy Duty Mesh

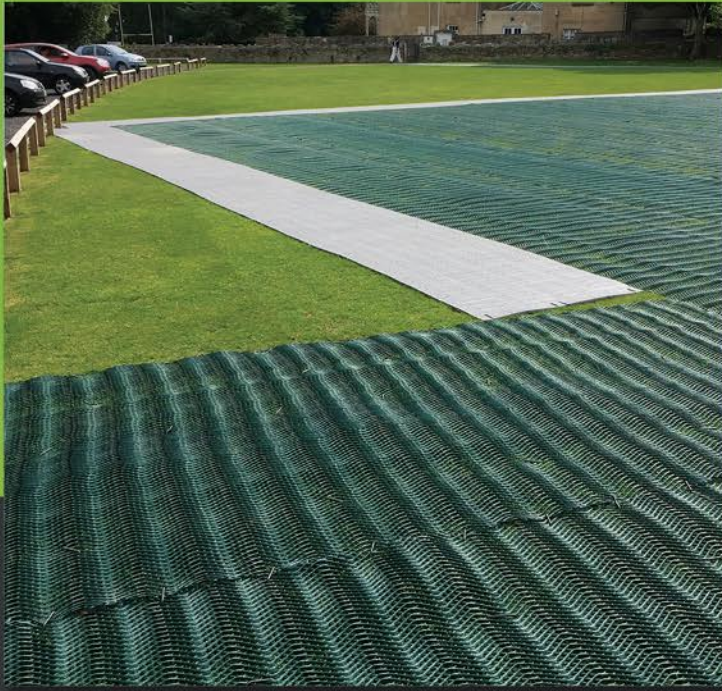


**Suitable for light vehicle
& heavy pedestrian use**



- » High level of grass reinforcement – up to 8 tonnes per axle (imposed load)
- » Fast and cost-effective installation compared to plastic paving grids
- » Ideal for permanent or temporary applications
- » Up to 97% improved slip resistance compared to the standard grass protection meshes
- » Robust, reliable and simple to install
- » Protects high-usage grassed areas from becoming a muddy mess
- » Perfect alternative to impermeable paved surfaces





Internationally proven Heavy Duty Mesh delivers strong temporary access for all weather and ground conditions.

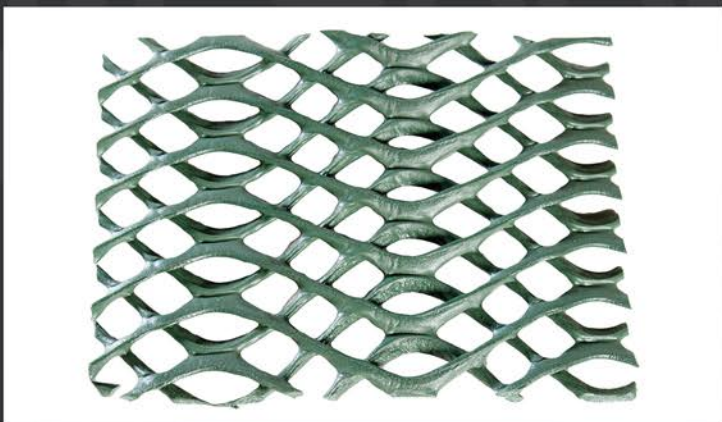
- » Civil Engineering » Transmission
- » Construction » Infrastructure
- » Oil & Gas » Military Sites
- » Utilities Maintenance » Events

Technical Specifications

Material:	100% recycled HDPE	
Dimensions		
Option 1:	39'4" x 393'7"	1m x 10m
Option 2:	78'7" x 787'4"	2m x 20m
Depth:	0'55"	14.5mm
Weight:	4.4lbs	2kg per m ²
Surface Area:	32.8' ² or 65.6' ²	10m ² or 20m ²

Structure & Material: Oscillated High Density Polyethylene

Tensile Strength [MD]: 16 kN/m



Features

An improved heavy duty thick polyethylene mesh for reinforcing and protecting grassed surfaces prone to wear, rutting and smearing which can result in muddy surfaces incapable of withstanding vehicular or pedestrian applications.

Our slip resistant mesh has been developed with an oscillated grass protection mesh structure which is designed to increase traction and improve slip resistance by up to 97% compared to standard straight oriented meshes.

A Strong Hold

Perfect alternative to impermeable paved surfaces where natural grassed traffic routes and driveways are preferred and where planning restrictions are applied or cost savings are being considered.

This sought-after alternative to paving is suited for budget applications as part of Sustainable Urban Drainage Systems (SUDS).

Grassform Group

Little Woodbarns Farm Yard, Green Street, Fryerning, Ingatestone, Essex, CM4 0NT UK

www.grassform.co.uk - email: sales@grassform.co.uk

Tel: +44 (0) 1277 353 686 Fax: +44 (0) 1277 356890

**GRASSFORM
GROUP**

www.grassform.co.uk